



BRAND
ATAKENT

En İyi Firmalar
En İyi Projelere İmza Atarlar

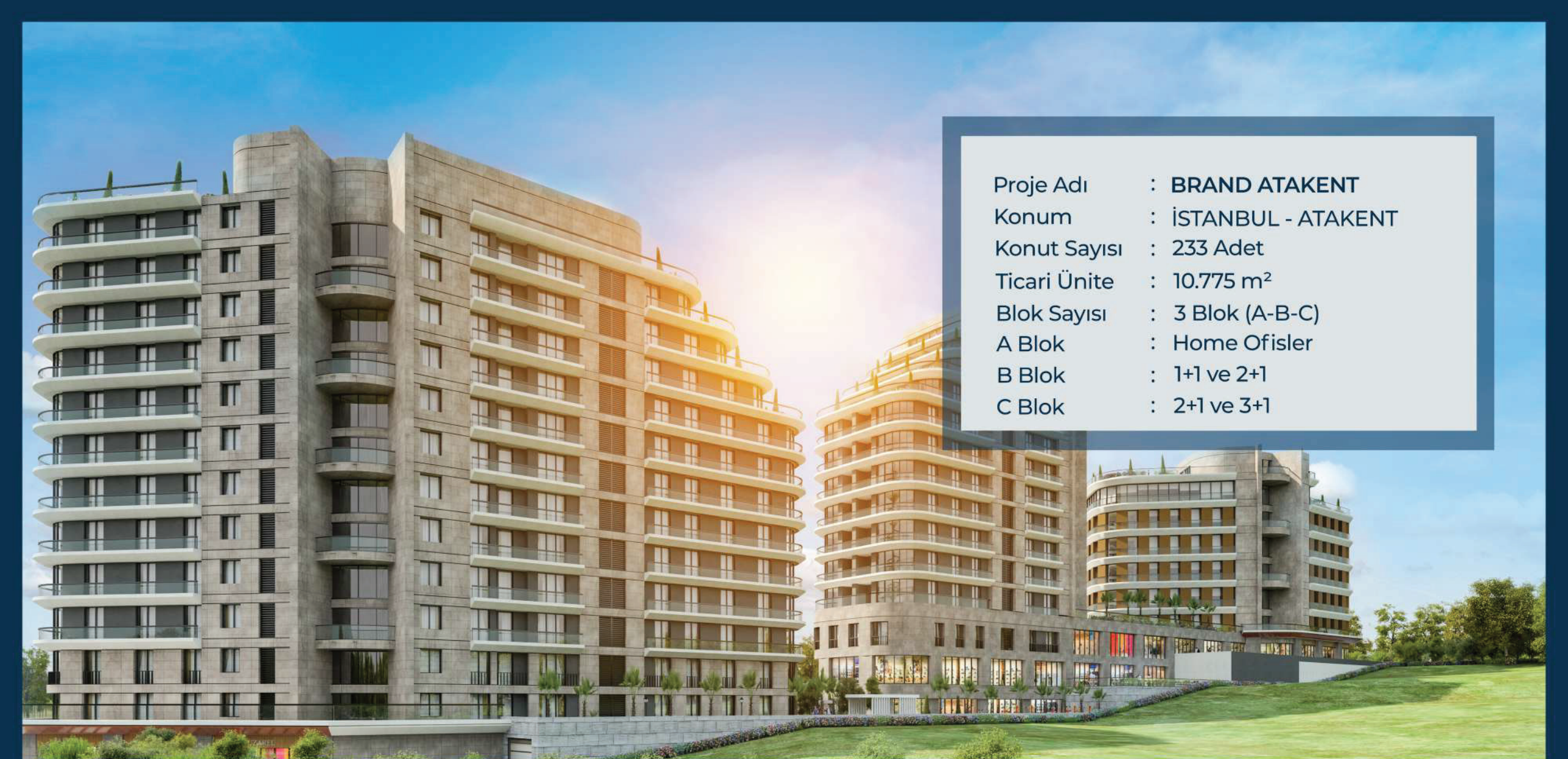


EMSYAPI®

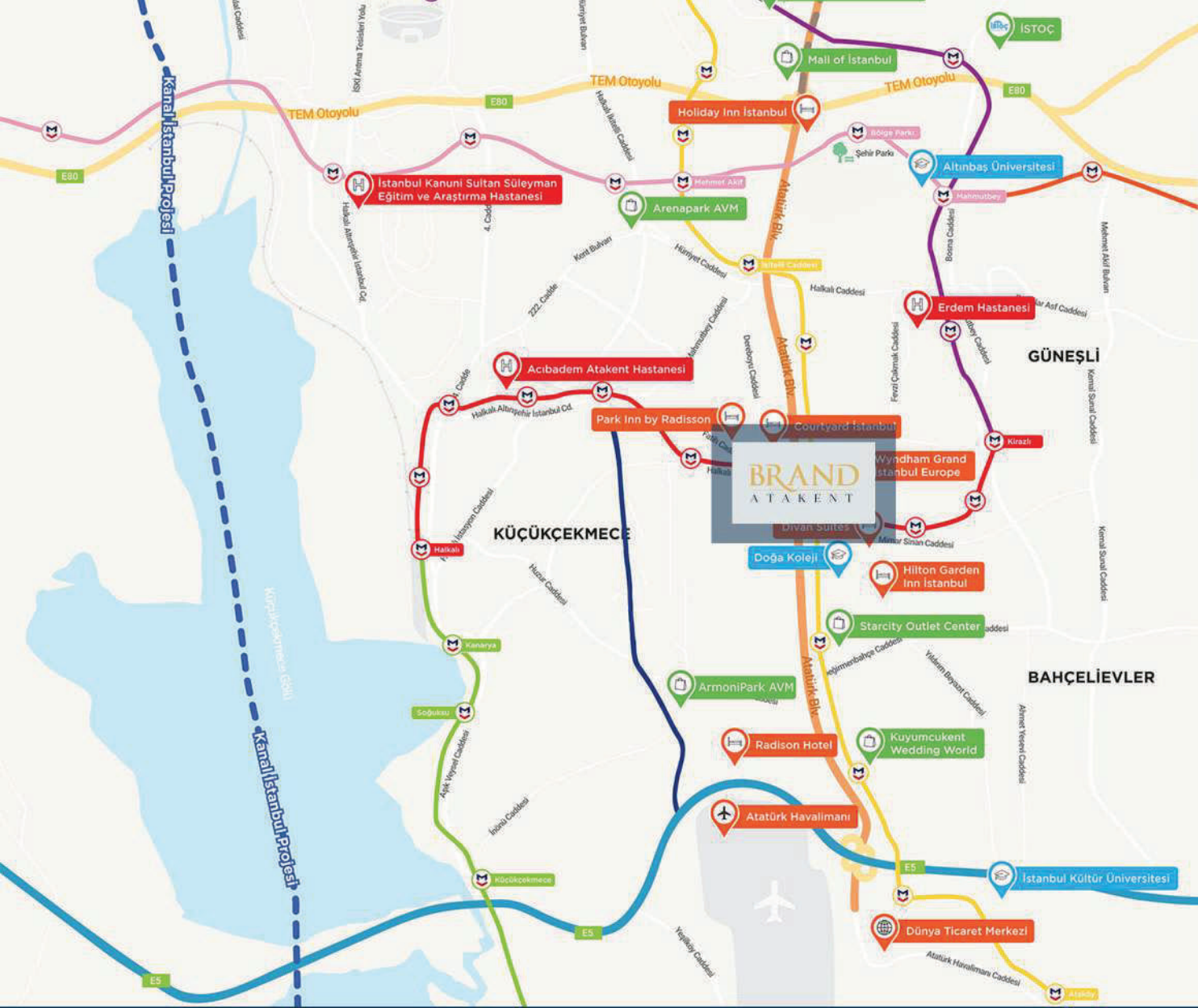
BRAND









A T A K E N T

1. ETAP



Proje Adı : **BRAND ATAKENT**
Konum : İSTANBUL - ATAKENT
Konut Sayısı : 233 Adet
Ticari Ünite : 10.775 m²
Blok Sayısı : 3 Blok (A-B-C)
A Blok : Home Ofisler
B Blok : 1+1 ve 2+1
C Blok : 2+1 ve 3+1



-  Kanal İstanbul Projesi
-  3. Havalimanı Yolu
-  E-5/Metrobüs
-  Kirazlı-Olimpiyat Stadi/Metrokent
-  Mahmutbey/Kabataş Hattı
-  Halkalı/Sirkeci Marmaray
-  Esenyurt/Mahmutbey
-  Kirazlı/Halkalı
-  Ataköy/İkitelli
-  Basın Ekspres



İstanbul Havalimanı
35 dk



Mall Of İstanbul
17 dk



Starcity Outlet
11 dk



Armoni Park Center
7 dk



Metro İstasyonu
1 dk



Arena Park Avm
10 dk



Metro Market
11 dk



Altınbaş Üniversitesi
14 dk



Halkalı Kent Hastanesi
2 dk



7 Nolu Sağlık Ocağı
2 dk

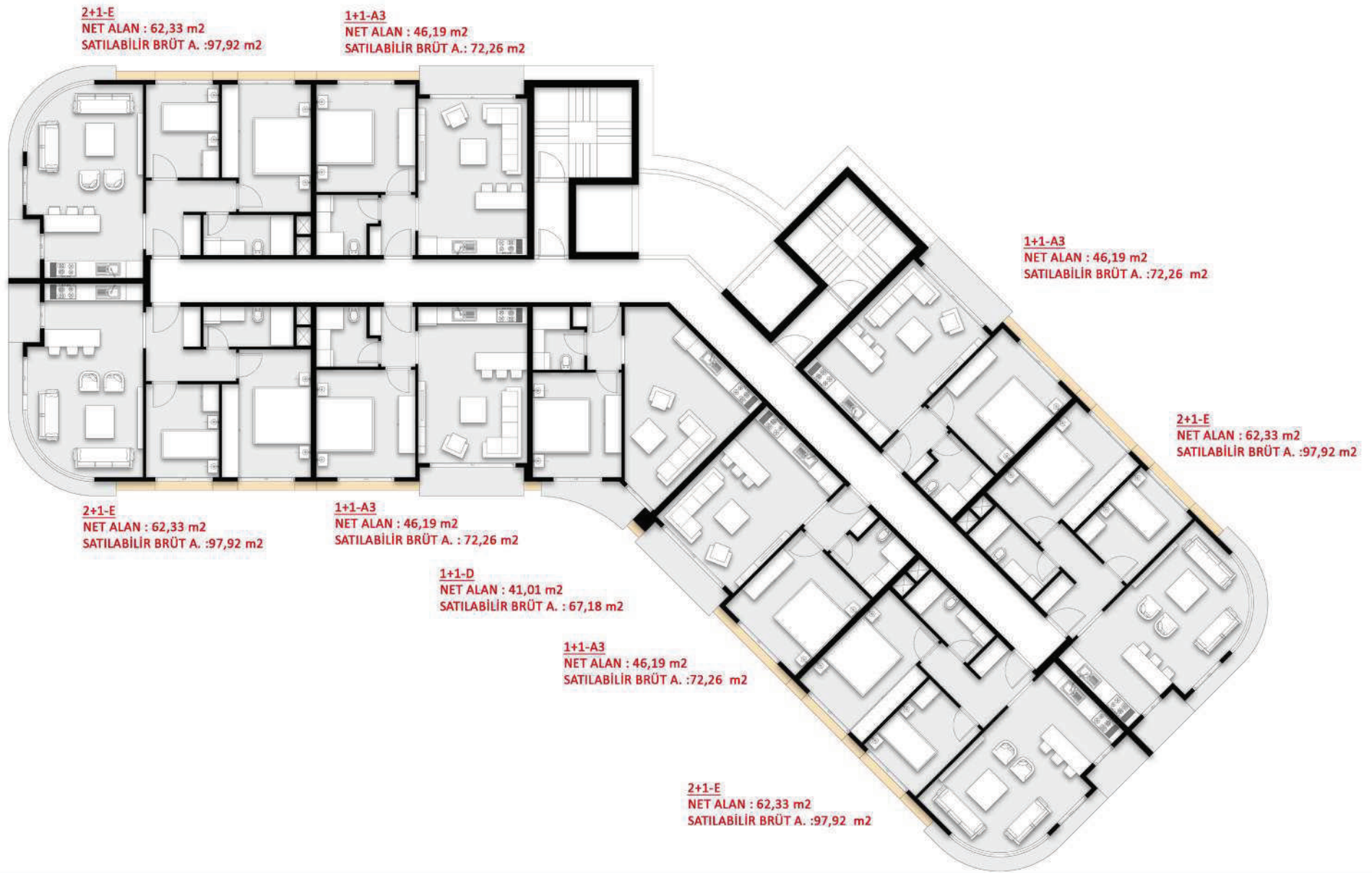


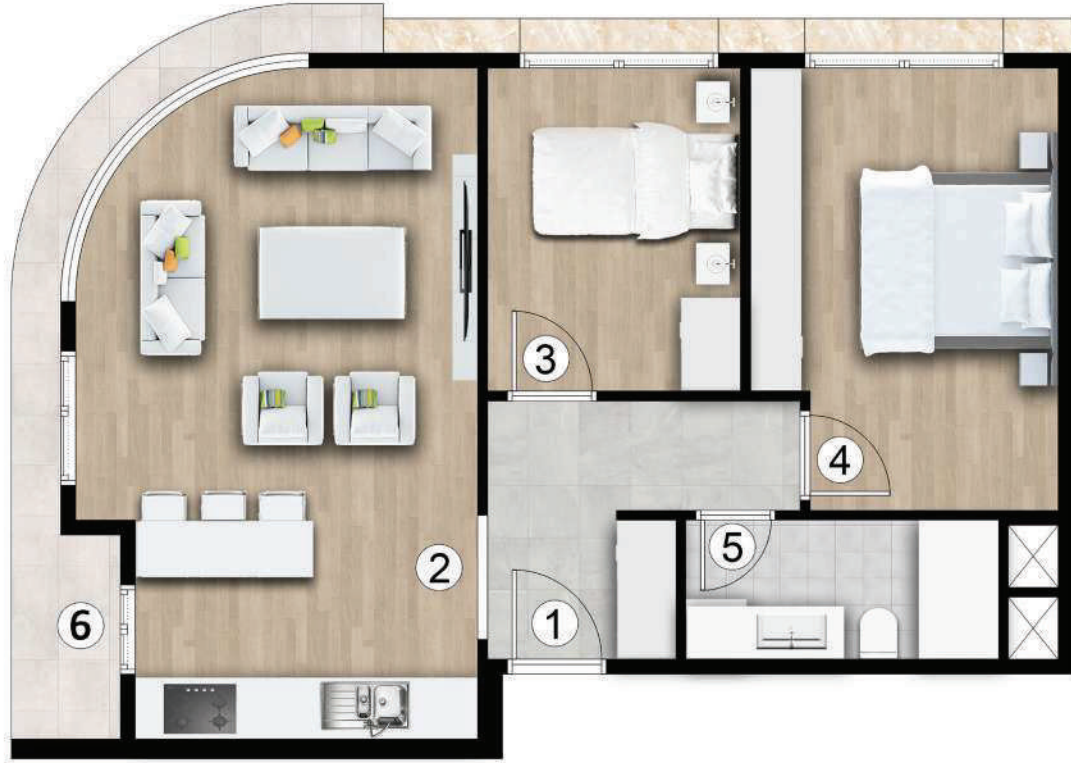
Millet Bahçesi
5 dk



CarrefourSA
4 dk

BRAND ATAKENT İÇ DETAYLAR (A BLOK)





TİP 2+1 - E AÇIK MUTFAK

NET ALAN : 62,33 m²

SATIŞA ESAS BRÜT ALAN : 97,92 m²

1- ANTRE: 6,20 m²

2- SALON+MUTFAK: 24,46 m²

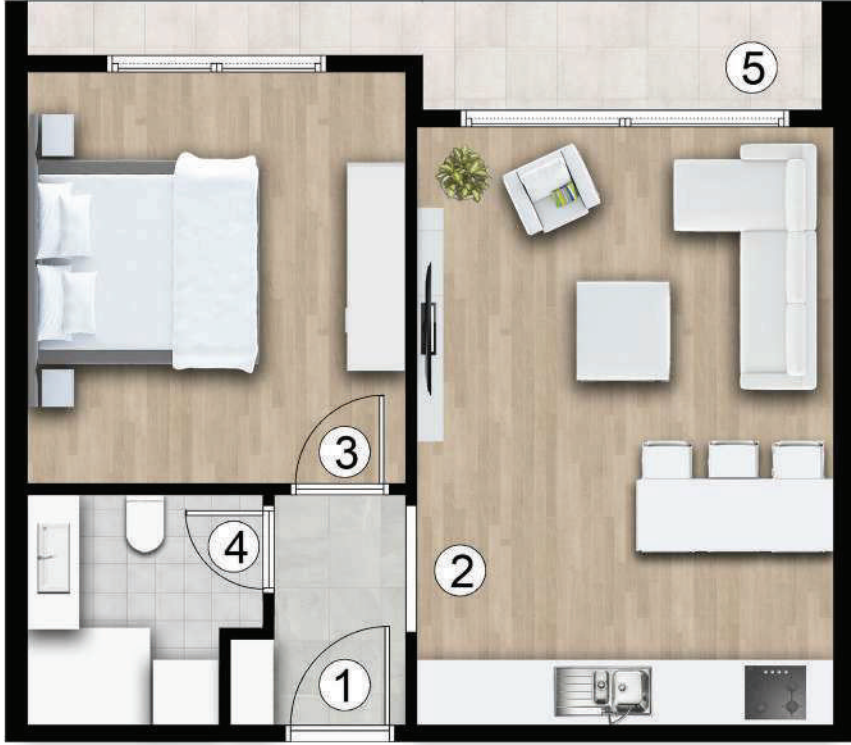
3- YATAK ODASI : 8,16 m²

4- E. YATAK ODASI : 12,69 m²

5- BANYO : 4,86 m²

6- BALKON : 5,95 m²





TİP 1+1 - A3 AÇIK MUTFAK

NET ALAN : 46,19 m²

SATIŞA ESAS BRÜT ALAN : 72,26 m²

1- ANTRE: 2,80m²

2- SALON+MUTFAK: 20,71 m²

3- E.YATAK ODASI : 12,94 m²

4- BANYO : 4,19 m²

5- BALKON : 5,55 m²

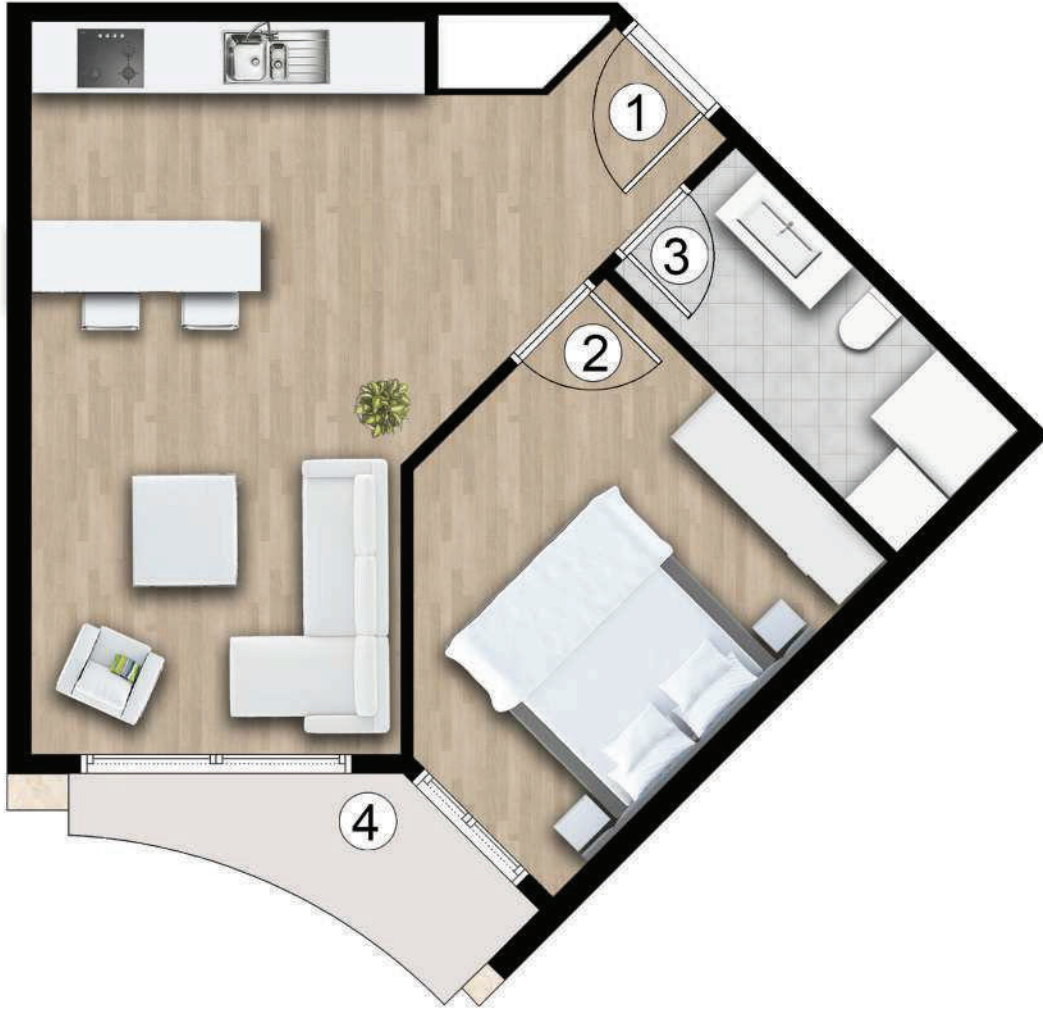


ARKA GÖRÜNÜŞ



ÖN GÖRÜNÜŞ





TİP 1+1 - D AÇIK MUTFAK

NET ALAN : 41,01 m²

SATIŞA ESAS BRÜT ALAN : 67,18 m²

1- SALON+MUTFAK: 22,46 m²

2- E.YATAK ODASI : 10,88 m²

3- BANYO : 4,71 m²

4- BALKON : 2,96 m²



ARKA GÖRÜNÜŞ



ÖN GÖRÜNÜŞ



BRAND ATAKENT İÇ DETAYLAR (B BLOK)





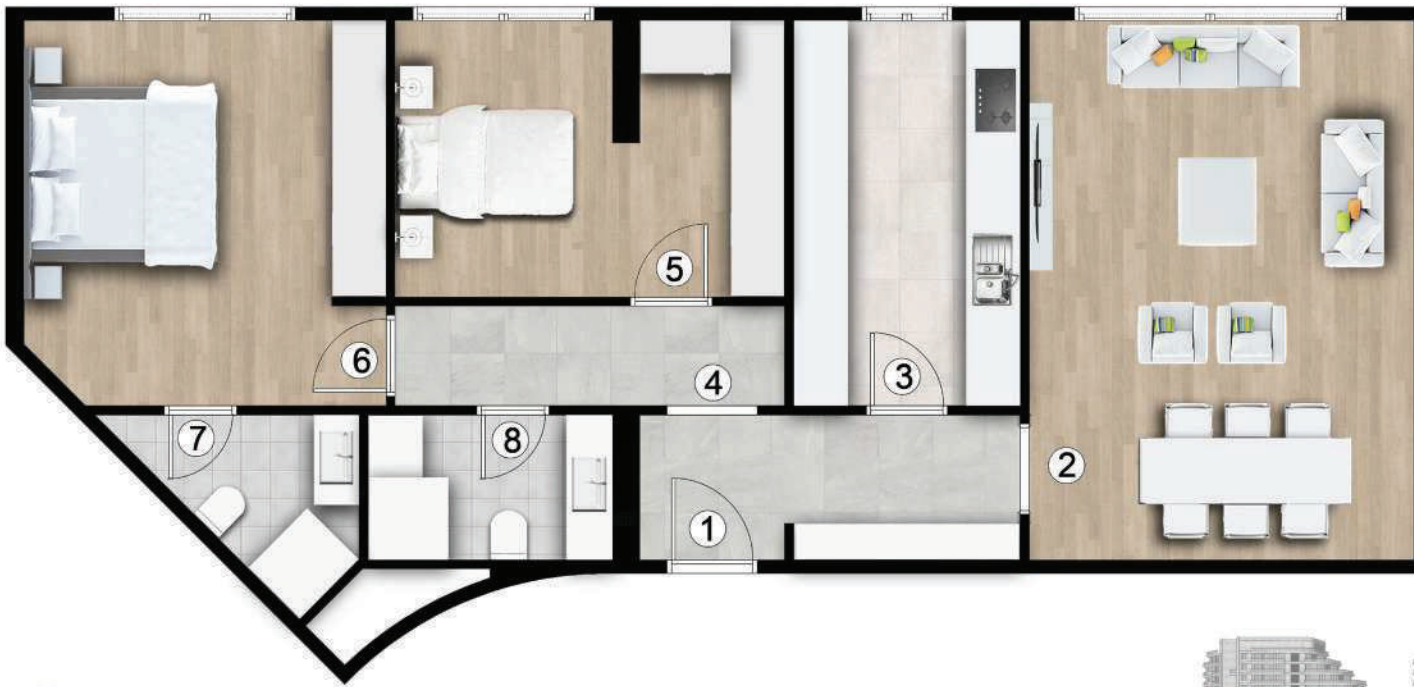
TİP 2+1 - A (KAPALI MUTFAK)

NET ALAN : 84,16 m²

SATIŞA ESAS BRÜT ALAN : 132,48 m²

- 1- ANTRE: 7,57 m²
- 2- MUTFAK : 9,95 m²
- 3- SALON : 25,53 m²
- 4- YATAK ODASI : 11,02 m²
- 5- E.YATAK ODASI : 13,12 m²
- 6- E.BANYO : 3,61 m²
- 7- BANYO : 4,91 m²
- 8- BALKON : 9,46 m²



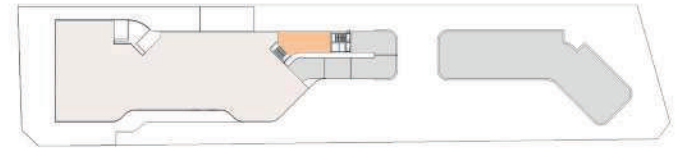


TİP 2+1 N

NET ALAN : 84,88 m²

SATIŞA ESAS BRÜT ALAN :144,29 m²

- 1- ANTRE: 6,68 m²
- 2- SALON : 25,30 m²
- 3- MUTFAK: 10,62 m²
- 4- ANTRE: 4,73 m²
- 5- YATAK ODASI : 12,71 m²
- 6- E. YATAK ODASI : 16,71 m²
- 7- E. BANYO: 3,82 m²
- 8- BANYO: 4,32 m²



BRAND ATAKENT İÇ DETAYLAR (C BLOK)

3+1-A
NET ALAN : 110,47m²
SATILABİLİR BRÜT A. :174,60 m²

2+1-C
NET ALAN : 75,03 m²
SATILABİLİR BRÜT A. :122,79 m²

3+1-A
NET ALAN : 110,59 m²
SATILABİLİR BRÜT A. :174,23 m²

3+1-A
NET ALAN : 110,47 m²
SATILABİLİR BRÜT A. :174,60m²

2+1-C
NET ALAN : 75,24 m²
SATILABİLİR BRÜT A. :123,02 m²

2+1-D
NET ALAN : 86,37 m²
SATILABİLİR BRÜT A. :137,15 m²

2+1-B
NET ALAN : 70,39 m²
SATILABİLİR BRÜT A. :110,97 m²



TİP 3+1-A (KAPALI MUTFAK)

NET ALAN : 110,47 m²

SATIŞA ESAS BRÜT ALAN : 174,60 m²

- 1- ANTRE: 10,96 m²
- 2- MUTFAK : 12,25 m²
- 3- SALON: 28,54 m²
- 4- YATAK ODASI : 10,05 m²
- 5- YATAK ODASI : 10,32 m²
- 6- E.YATAK ODASI : 14,41 m²
- 7- GİYİNME ODASI : 3,20 m²
- 8- E.BANYO : 3,44 m²
- 9- ÇAMAŞIR ODASI : 0,77 m²
- 10- BANYO : 4,08 m²
- 11- BALKON: 9,06 m²
- 12- BALKON: 3,45 m²

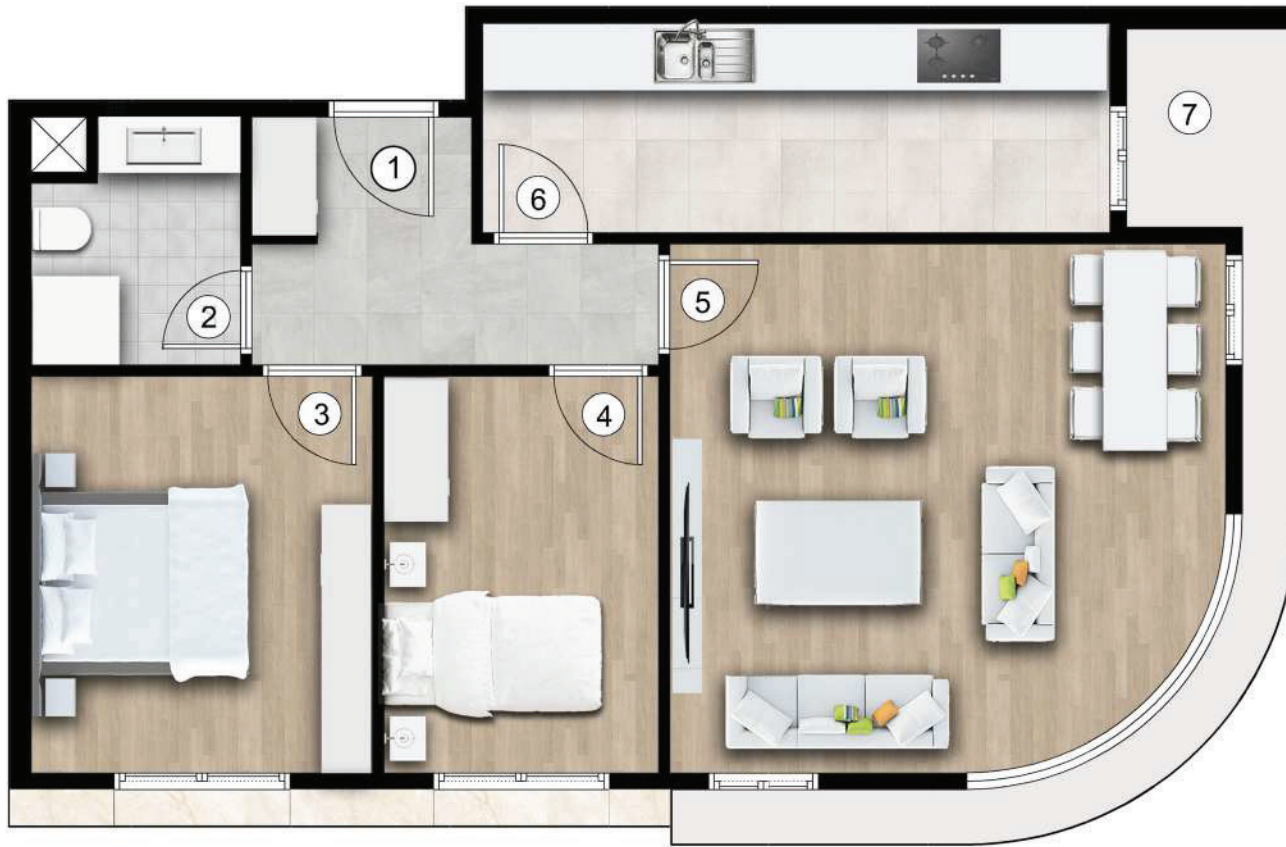


ARKA GÖRÜNÜŞ



ÖN GÖRÜNÜŞ





TİP 2+1 - B (KAPALI MUTFAK)

NET ALAN : 70,39 m²

SATIŞA ESAS BRÜT ALAN : 110,97 m²

1- ANTRE: 6,31 m²

2- BANYO : 3,92 m²

3- E.YATAK ODASI : 11,16 m²

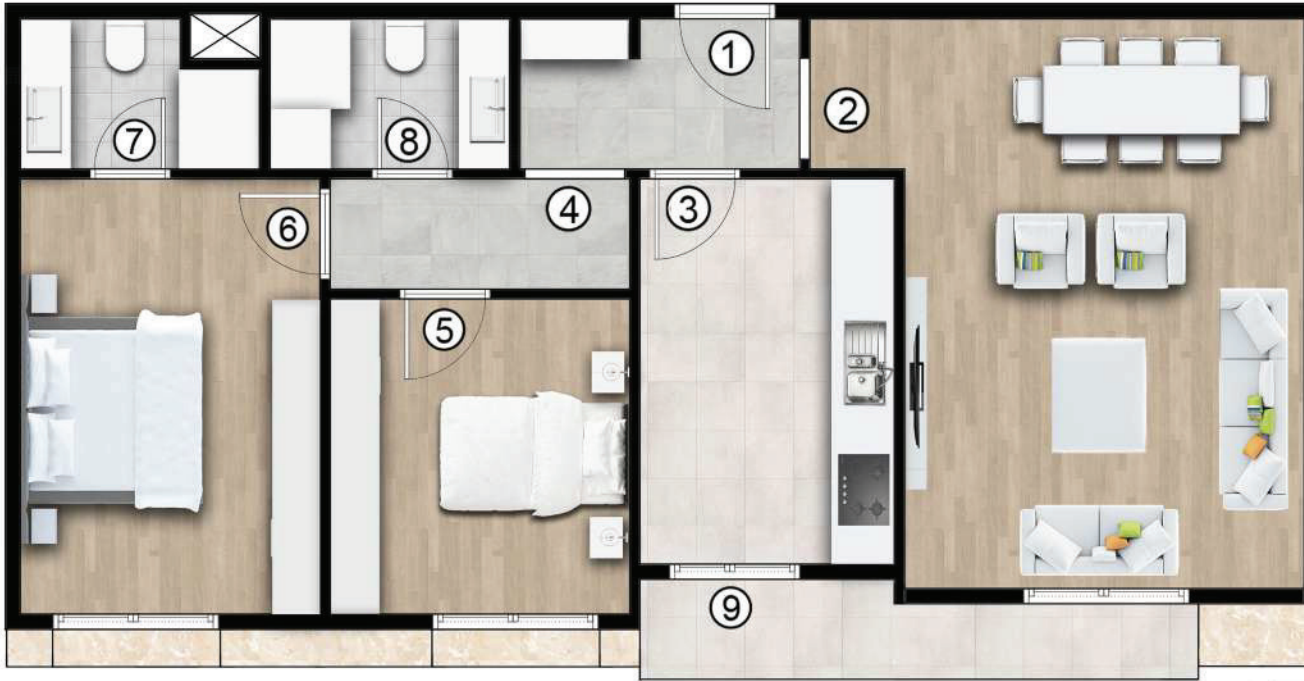
4- YATAK ODASI : 9,00 m²

5- SALON : 22,60 m²

6- MUTFAK : 10,55 m²

7- BALKON : 7,60 m²





TİP 2+1 C (KAPALI MUTFAK)

NET ALAN : 75,24 m²

SATIŞA ESAS BRÜT ALAN : 123,02m²

- 1- ANTRE: 4,16 m²
- 2- SALON : 24,31 m²
- 3- MUTFAK : 9,31 m²
- 4- HOL : 3,30 m²
- 5- YATAK ODASI : 9,18 m²
- 6- E.YATAK ODASI : 12,91 m²
- 7- E.BANYO : 3,20 m²
- 8- BANYO : 3,60 m²
- 9- BALKON: 5,27 m²



ARKA GÖRÜNÜŞ



ÖN GÖRÜNÜŞ





TİP 2+1-D (KAPALI MUTFAK)

NET ALAN : 86,37 m²

SATIŞA ESAS BRÜT ALAN : 137,15 m²

- 1- ANTRE: 5,78 m²
- 2- SALON: 23,30 m²
- 3- MUTFAK : 8,44 m²
- 4- HOL : 3,52 m²
- 5- YATAK ODASI : 9,23 m²
- 6- BANYO: 4,05 m²
- 7- E.YATAK ODASI :14,55 m²
- 8- E.BANYO : 5,76 m²
- 9- BALKON: 11,73 m²



ARKA GÖRÜNÜŞ



ÖN GÖRÜNÜŞ





TİP 2+1 M

NET ALAN : 81,26 m²

SATIŞA ESAS BRÜT ALAN :138,14 m²

1- ANTRE: 12,20 m²

2- SALON : 25,96m²

3- MUTFAK: 7,85 m²

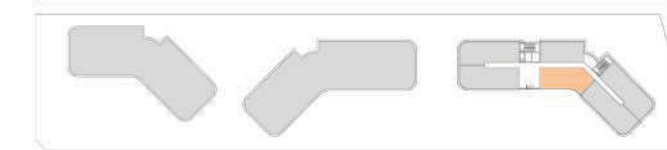
4- YATAK ODASI: 9,28 m²

5- E. YATAK ODASI : 12,87 m²

6- GİYİNME ODASI : 4,62 m²

7- E. BANYO: 4,19 m²

8- BANYO: 4,29 m²





TİP 2+1-L (AÇIK MUTFAK)

NET ALAN : 63,28 m²

SATIŞA ESAS BRÜT ALAN : 102,61 m²

1- ANTRE: 4,43 m²

2- SALON: 25,03 m²

3- YATAK ODASI: 8,52 m²

4- E. YATAK ODASI: 15,88 m²

5- BANYO: 4,16 m²

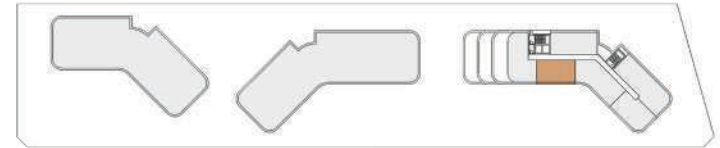
6- BALKON: 5,27 m²



ARKA GÖRÜNÜŞ



ÖN GÖRÜNÜŞ



Sosyal Alanlar & İmkanlar

- Kapalı Yüzme Havuzu
- Sauna
- Buhar Odası
- Spor Salonu
- Masa Tenisi
- Kapalı Otopark
- 7/24 Güvenlik
- Resepsiyon



BRAND
ATAKENT

444 20 67
www.ems-yapi.com





BRAND
ATAKENT

444 20 67
www.ems-yapi.com



BRAND
A TAKENT

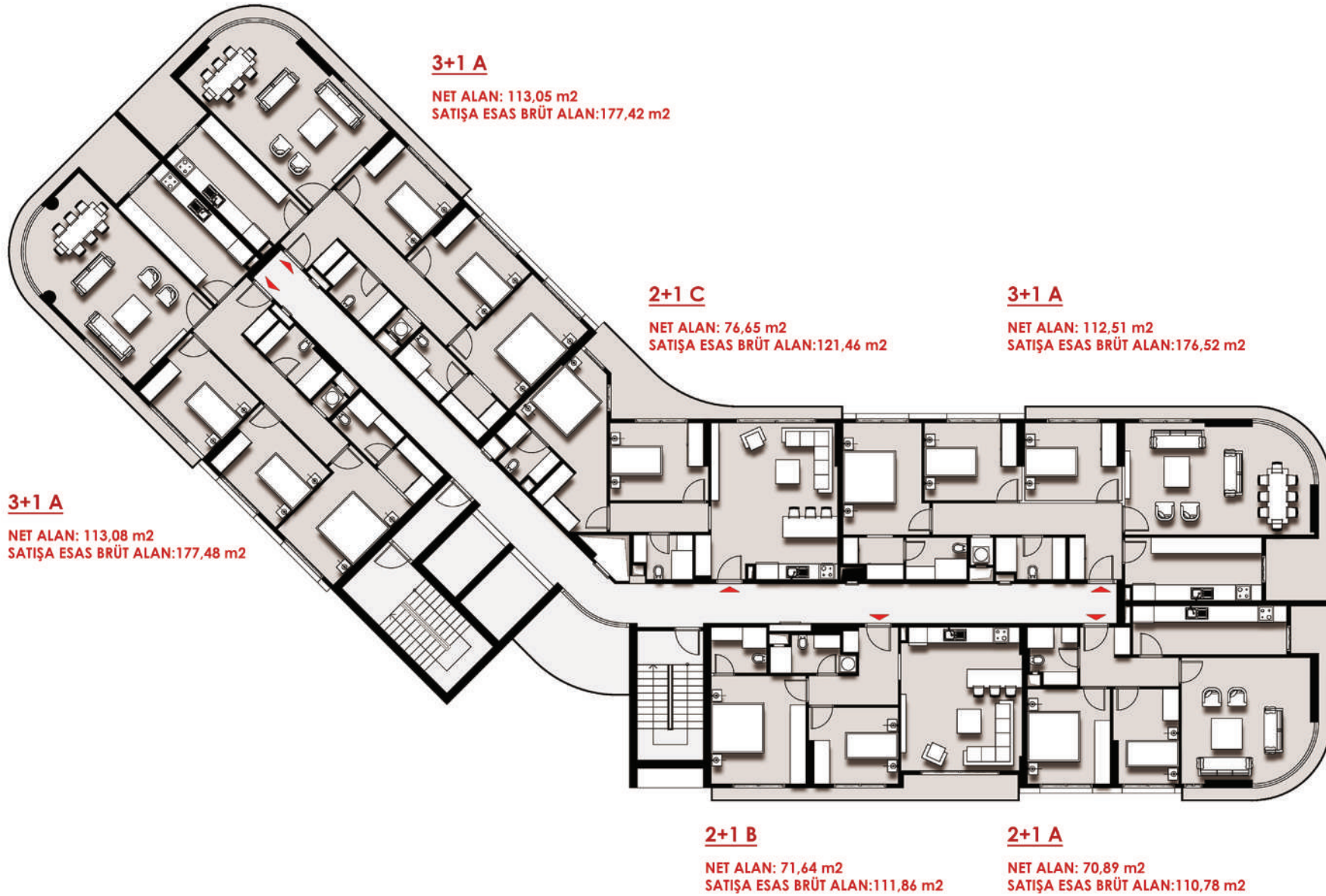
444 20 67
www.ems-yapi.com

BRAND

A T A K E N T

2. ETAP

BRAND ATAKENT KAT PLANI (A BLOK)



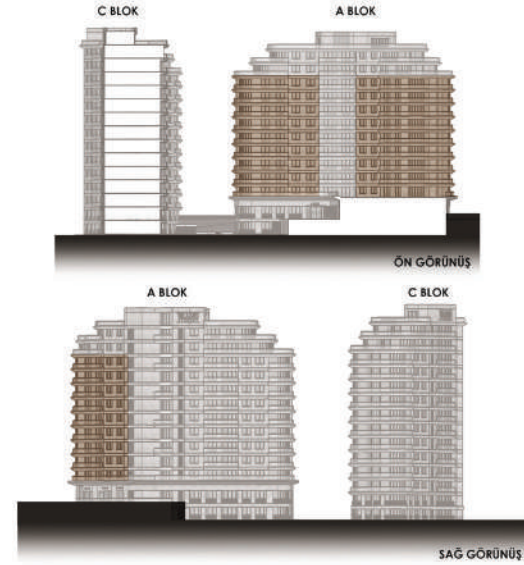


TİP 3+1-A

1 ANTRE	11,98 m2
2 MUTFAK	12,30 m2
3 SALON	28,87 m2
4 YATAK ODASI	10,58 m2
5 YATAK ODASI	10,58 m2
6 E.YATAK ODASI	13,11 m2
7 GİYİNME ODASI	3,14 m2
8 E.BANYO	3,68 m2
9 ÇAMAŞIR ODASI	0,89 m2
10 BANYO	4,00 m2
11 BALKON	13,38 m2

NET ALAN : 112,51 m²

SATIŞA ESAS BRÜT ALAN : 176,52 m²



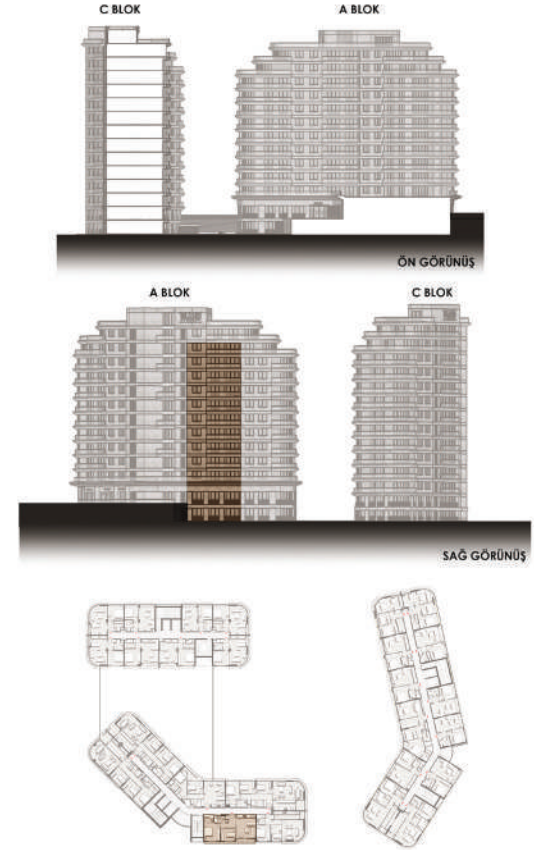


TİP 2+1-B

1 ANTRE	7,00 m ²
2 SALON-MUTFAK	24,73 m ²
3 YATAK ODASI	9,53 m ²
4 E.YATAK ODASI	14,76 m ²
5 E.BANYO	3,67 m ²
6 BANYO	3,90m ²
7 BALKON	8,05 m ²

NET ALAN : 71,64 m²

SATIŞA ESAS BRÜT ALAN : 111,86 m²



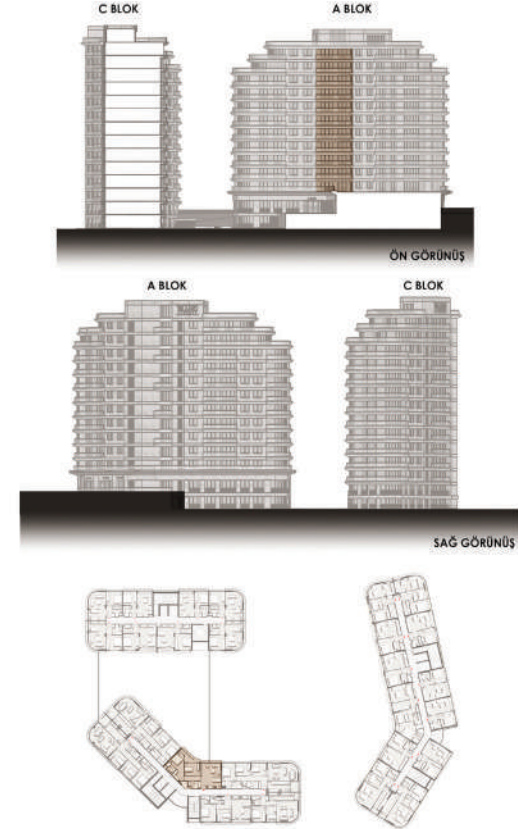


TİP 2+1-C

1 SALON-MUTFAK	29,09 m2
2 KORİDOR	4,13 m2
3 YATAK ODASI	10,73 m2
4 E.YATAK ODASI	15,59 m2
5 E.BANYO	3,38 m2
6 BANYO	3,50m2
7 BALKON	10,23m2

NET ALAN : 76,65 m²

SATIŞA ESAS BRÜT ALAN : 121,46 m²



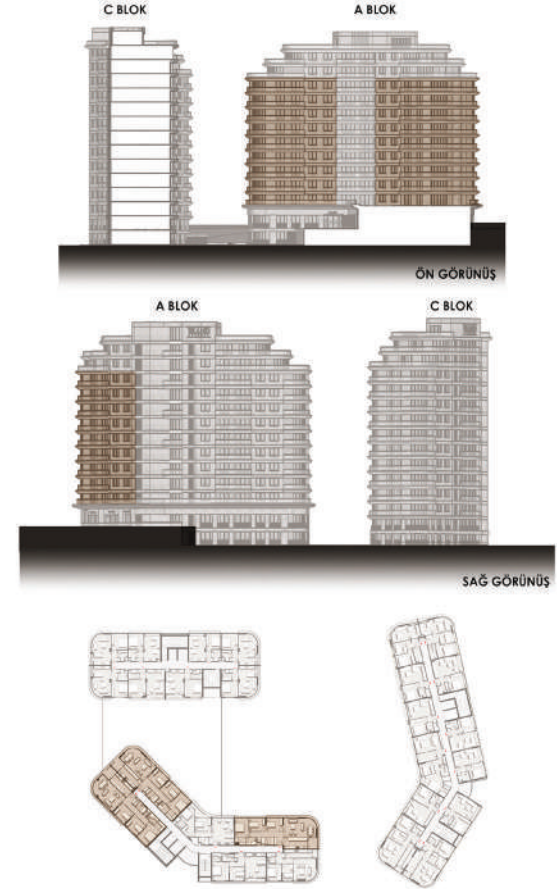


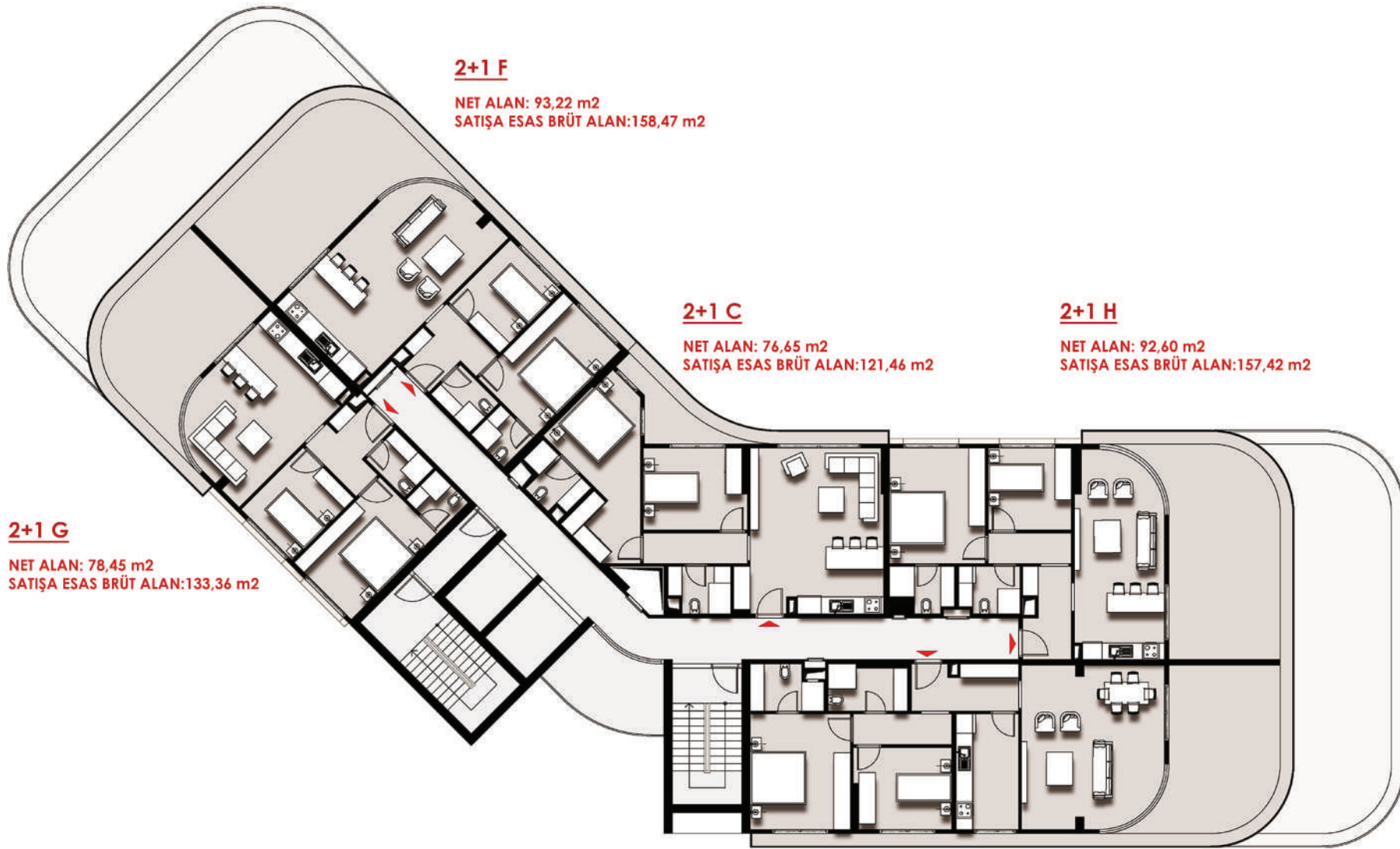
TİP 3+1-A

1 ANTRE	11,98 m2
2 MUTFAK	12,30 m2
3 SALON	28,87 m2
4 YATAK ODASI	10,58 m2
5 YATAK ODASI	10,58 m2
6 E.YATAK ODASI	13,11 m2
7 GİYİNME ODASI	3,14 m2
8 E.BANYO	3,68 m2
9 ÇAMAŞIR ODASI	0,89 m2
10 BANYO	4,00 m2
11 BALKON	13,38 m2

NET ALAN : 112,51 m²

SATIŞA ESAS BRÜT ALAN : 176,52 m²





2+1 F

NET ALAN: 93,22 m²
SATIŞA ESAS BRÜT ALAN:158,47 m²

2+1 C

NET ALAN: 76,65 m²
SATIŞA ESAS BRÜT ALAN:121,46 m²

2+1 H

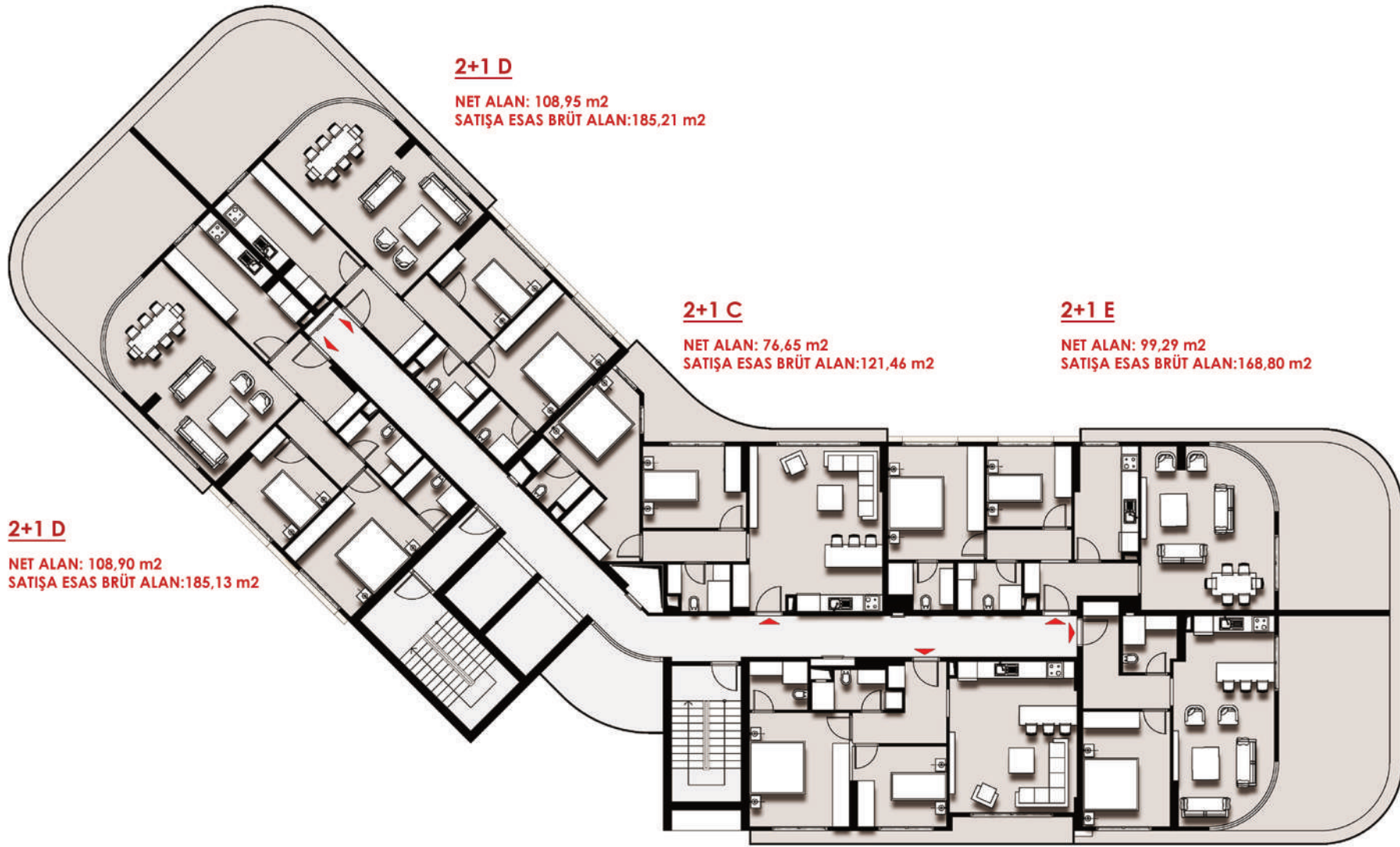
NET ALAN: 92,60 m²
SATIŞA ESAS BRÜT ALAN:157,42 m²

2+1 G

NET ALAN: 78,45 m²
SATIŞA ESAS BRÜT ALAN:133,36 m²

2+1 I

NET ALAN: 106,35 m²
SATIŞA ESAS BRÜT ALAN:180,79 m²



2+1 D

NET ALAN: 108,95 m²
SATIŞA ESAS BRÜT ALAN:185,21 m²

2+1 C

NET ALAN: 76,65 m²
SATIŞA ESAS BRÜT ALAN:121,46 m²

2+1 E

NET ALAN: 99,29 m²
SATIŞA ESAS BRÜT ALAN:168,80 m²

2+1 D

NET ALAN: 108,90 m²
SATIŞA ESAS BRÜT ALAN:185,13 m²

2+1 B

NET ALAN: 71,64 m²
SATIŞA ESAS BRÜT ALAN:111,86 m²

1+1 C

NET ALAN: 80,47 m²
SATIŞA ESAS BRÜT ALAN:136,80 m²

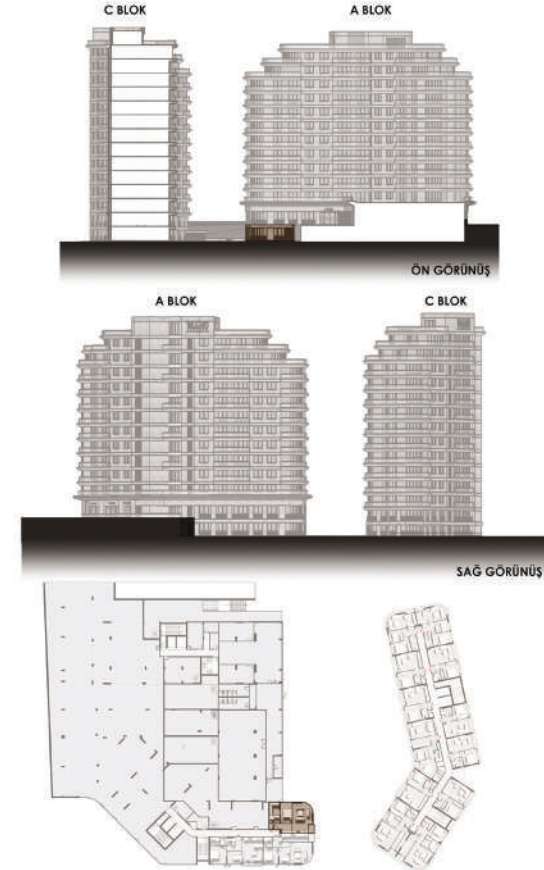


TİP 1+1-F

1 ANTRE	6,97 m2
2 SALON-MUTFAK	26,55 m2
3 YATAK ODASI	11,96 m2
4 GİYİNME ODASI	5,58 m2
5 BANYO	4,14 m2
6 BALKON	2,43 m2
7 ÇAMAŞIR ODASI	1,00 m2

NET ALAN : 58,63 m²

SATIŞA ESAS BRÜT ALAN : 98,73 m²



BRAND ATAKENT KAT PLANI (B BLOK)

1+1- B

NET ALAN: 51,11 m²
SATIŞA ESAS BRÜT ALAN:78,20 m²

1+1- A2

NET ALAN: 41,92 m²
SATIŞA ESAS BRÜT ALAN:65,40 m²

1+1- A2

NET ALAN: 41,92 m²
SATIŞA ESAS BRÜT ALAN:65,40 m²

1+1- B

NET ALAN: 51,08 m²
SATIŞA ESAS BRÜT ALAN:77,91 m²



1+1- B

NET ALAN: 51,26 m²
SATIŞA ESAS BRÜT ALAN:78,20 m²

1+1- A

NET ALAN: 48,06 m²
SATIŞA ESAS BRÜT ALAN:75,07 m²

1+1- A

NET ALAN: 48,30 m²
SATIŞA ESAS BRÜT ALAN:75,36 m²

1+1- B

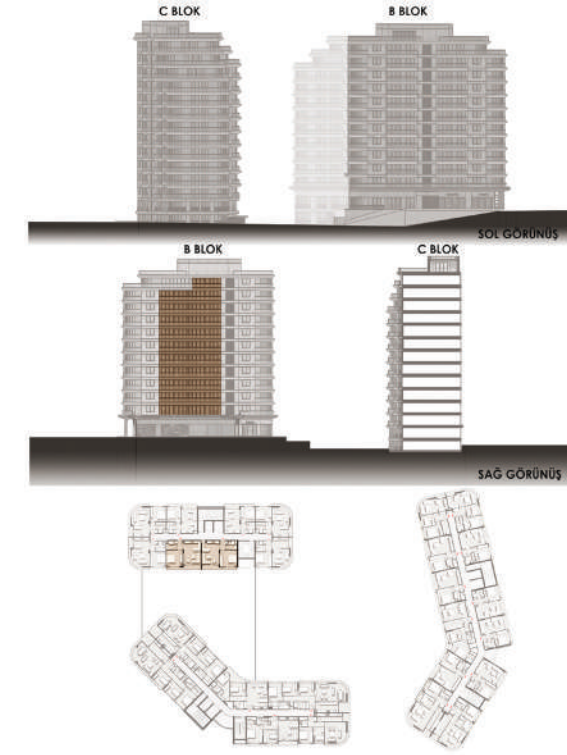
NET ALAN: 50,93 m²
SATIŞA ESAS BRÜT ALAN:77,63 m²



TİP 1+1-A

1 ANTRE	2,87 m ²
2 BANYO	4,12 m ²
3 SALON-MUTFAK	21,47 m ²
4 E.YATAK ODASI	13,72 m ²
5 BALKON	5,88 m ²

NET ALAN : 48,06 m²
SATIŞA ESAS BRÜT ALAN : 75,07 m²

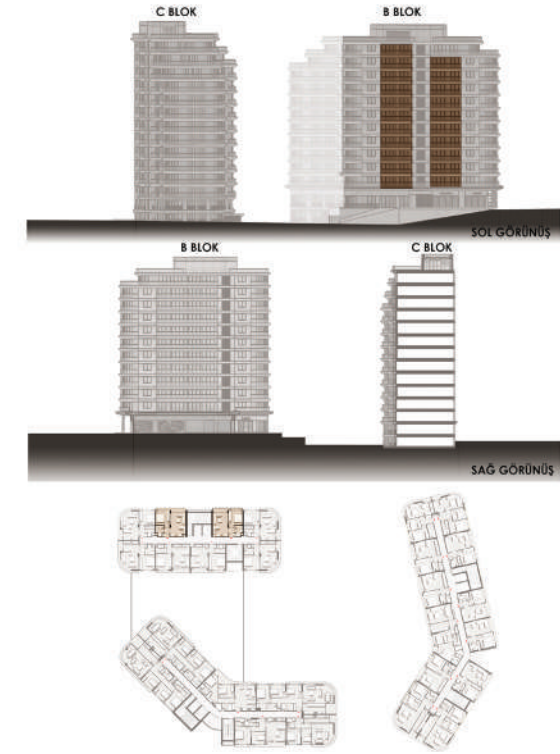




TİP 1+1-A2

1 ANTRE	2,81 m ²
2 BANYO	3,95 m ²
3 SALON-MUTFAK	18,85 m ²
4 E.YATAK ODASI	11,16 m ²
5 BALKON	5,15 m ²

NET ALAN : 41,92 m²
SATIŞA ESAS BRÜT ALAN : 65,40 m²



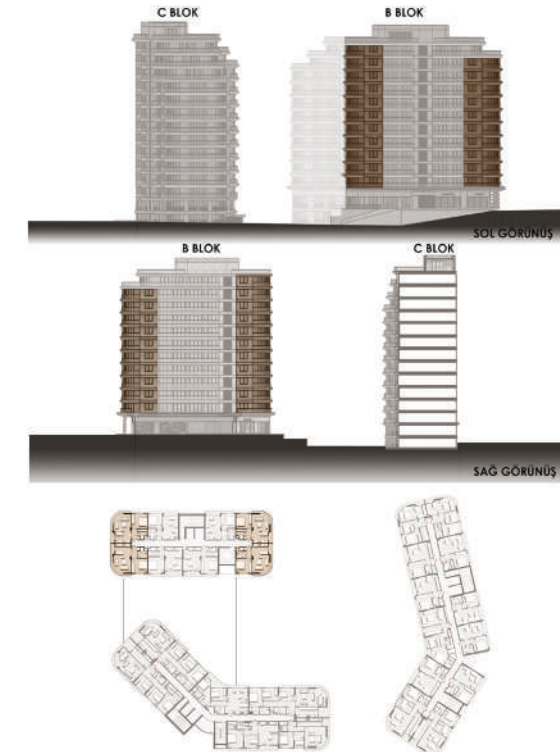


TİP 1+1-B

1 ANTRE	3,48 m ²
2 BANYO	4,28 m ²
3 SALON-MUTFAK	24,60 m ²
4 E.YATAK ODASI	12,24 m ²
5 BALKON	6,48 m ²

NET ALAN : 51,08 m²

SATIŞA ESAS BRÜT ALAN : 77,91 m²



2+1- O

NET ALAN: 93,56 m²
SATIŞA ESAS BRÜT ALAN:159,05 m²

1+1- A2

NET ALAN: 41,92 m²
SATIŞA ESAS BRÜT ALAN:65,40 m²

1+1- B

NET ALAN: 51,08 m²
SATIŞA ESAS BRÜT ALAN:77,91 m²



2+1- N

NET ALAN: 99,17 m²
SATIŞA ESAS BRÜT ALAN:168,58 m²

1+1- A

NET ALAN: 48,30 m²
SATIŞA ESAS BRÜT ALAN:75,36 m²

1+1- B

NET ALAN: 50,93 m²
SATIŞA ESAS BRÜT ALAN:77,63 m²

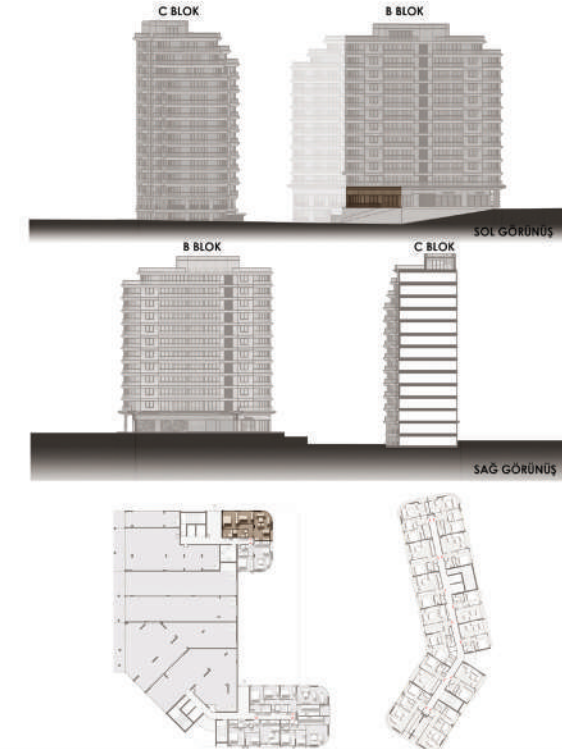


TİP 2+1 P

1 ANTRE	6,87 m ²
2 MUTFAK-SALON	24,63 m ²
3 YATAK ODASI	9,69 m ²
4 E.YATAK ODASI	14,78 m ²
5 E.BANYO	4,00 m ²
6 BANYO	4,37 m ²
7 ZEMİN TERASI	1,22 m ²

NET ALAN : 65,56 m²

SATIŞA ESAS BRÜT ALAN : 111,45 m²



BRAND ATAKENT KAT PLANI (C BLOK)

2+1 J

NET ALAN: 54,65 m²
SATIŞA ESAS BRÜT ALAN: 85,18 m²

1+1 A3

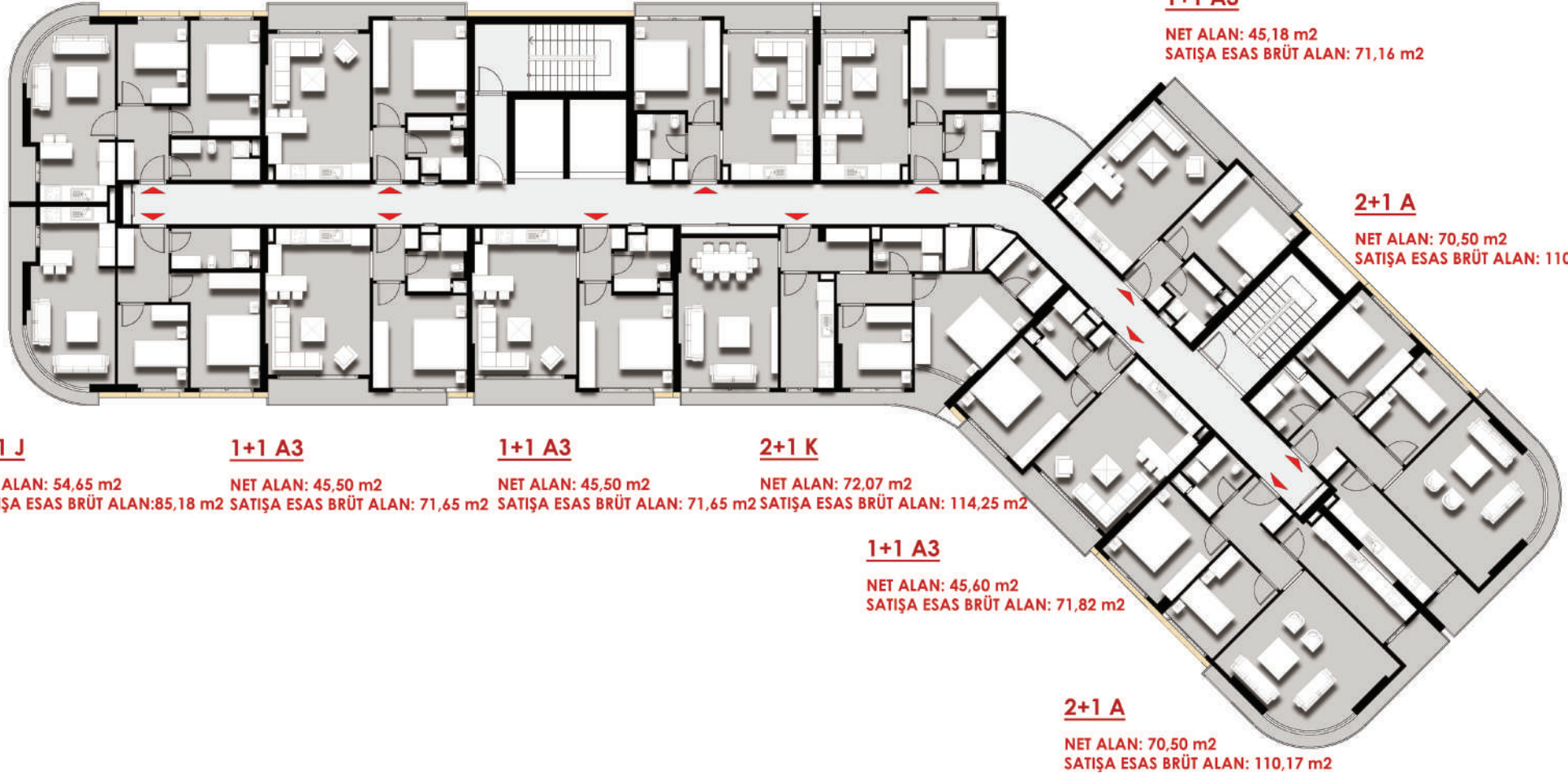
NET ALAN: 45,85 m²
SATIŞA ESAS BRÜT ALAN: 71,65 m²

1+1 A2

NET ALAN: 40,73 m²
SATIŞA ESAS BRÜT ALAN: 63,58 m²

1+1 A2

NET ALAN: 40,82 m²
SATIŞA ESAS BRÜT ALAN: 63,78 m²



1+1 A3

NET ALAN: 45,18 m²
SATIŞA ESAS BRÜT ALAN: 71,16 m²

2+1 A

NET ALAN: 70,50 m²
SATIŞA ESAS BRÜT ALAN: 110,17 m²

2+1 J

NET ALAN: 54,65 m²
SATIŞA ESAS BRÜT ALAN: 85,18 m²

1+1 A3

NET ALAN: 45,50 m²
SATIŞA ESAS BRÜT ALAN: 71,65 m²

1+1 A3

NET ALAN: 45,50 m²
SATIŞA ESAS BRÜT ALAN: 71,65 m²

2+1 K

NET ALAN: 72,07 m²
SATIŞA ESAS BRÜT ALAN: 114,25 m²

1+1 A3

NET ALAN: 45,60 m²
SATIŞA ESAS BRÜT ALAN: 71,82 m²

2+1 A

NET ALAN: 70,50 m²
SATIŞA ESAS BRÜT ALAN: 110,17 m²

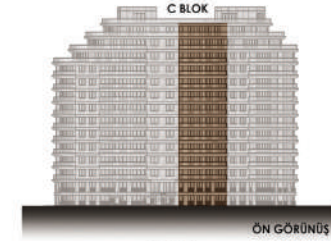


TİP 2+1 A

1 ANTRE	6,68 m ²
2 MUTFAK	9,74 m ²
3 SALON	22,51 m ²
4 YATAK ODASI	8,75 m ²
5 E.YATAK ODASI	11,06 m ²
6 BANYO	4,20 m ²
7 BALKON	7,52 m ²

NET ALAN : 70,46 m²

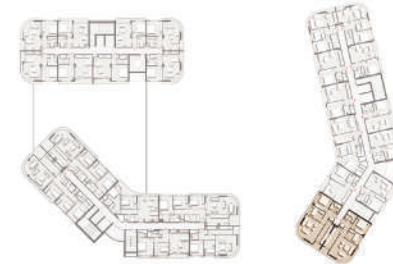
SATIŞA ESAS BRÜT ALAN : 110,17 m²

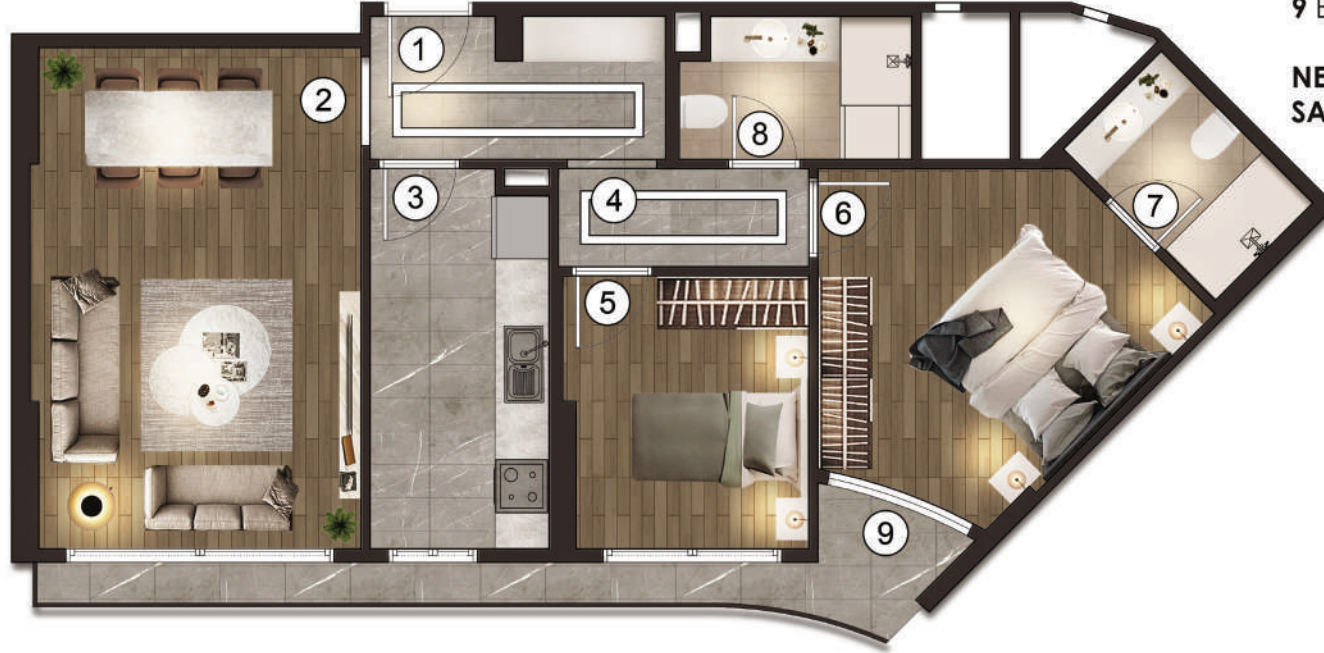


ÖN GÖRÜŞ



ARKA GÖRÜŞ



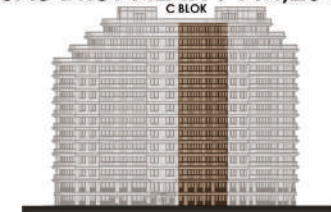


TİP 2+1 K

1 ANTRE	5,13 m ²
2 SALON	20,43 m ²
3 MUTFAK	8,32 m ²
4 KORİDOR	3,08 m ²
5 YATAK ODASI	8,14 m ²
6 E.YATAK ODASI	12,88 m ²
7 E.BANYO	3,72 m ²
8 BANYO	3,98 m ²
9 BALKON	6,39 m ²

NET ALAN : 72,07 m²

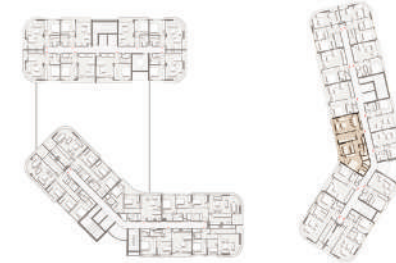
SATIŞA ESAS BRÜT ALAN : 114,25 m²



ÖN GÖRÜŞ



ARKA GÖRÜŞ



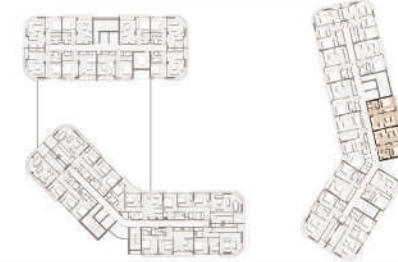
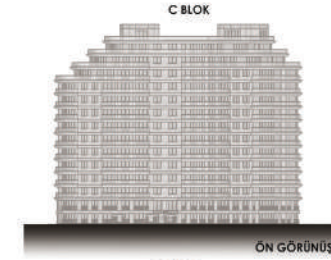


TİP 1+1 A2

1 ANTRE	2,81 m ²
2 BANYO	3,61 m ²
3 SALON-MUTFAK	18,08 m ²
4 E.YATAK ODASI	11,26 m ²
5 BALKON	4,97 m ²

NET ALAN : 40,73 m²

SATIŞA ESAS BRÜT ALAN : 63,58 m²



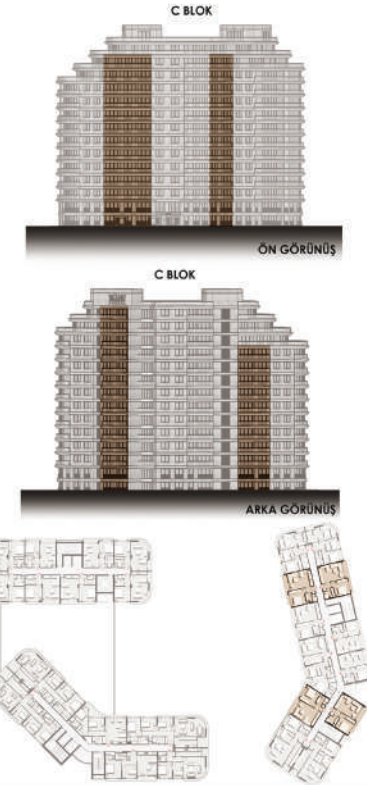


TİP 1+1 A3

1 ANTRE	2,71 m ²
2 SALON+MUTFAK	20,79 m ²
3 E. YATAK ODASI	12,62 m ²
4 BANYO	4,16 m ²
5 BALKON	5,57 m ²

NET ALAN : 45,85 m²

SATIŞA ESAS BRÜT ALAN : 71,65 m²



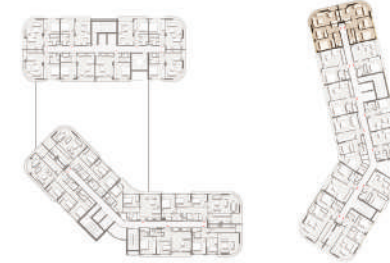
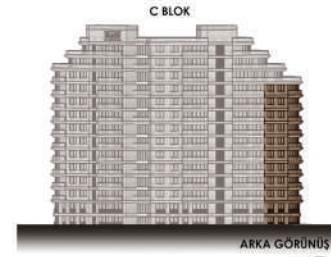
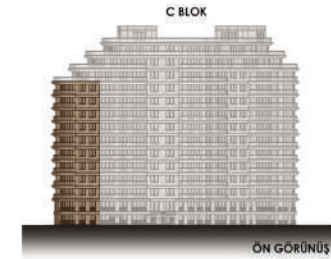


TİP 2+1-J

1 ANTRE	5,17 m ²
2 SALON-MUTFAK	19,36 m ²
3 YATAK ODASI	7,95 m ²
4 E.YATAK ODASI	11,95 m ²
5 BANYO	4,67 m ²
6 BALKON	5,56 m ²

NET ALAN : 54,65 m²

SATIŞA ESAS BRÜT ALAN : 85,18 m²



2+1 L

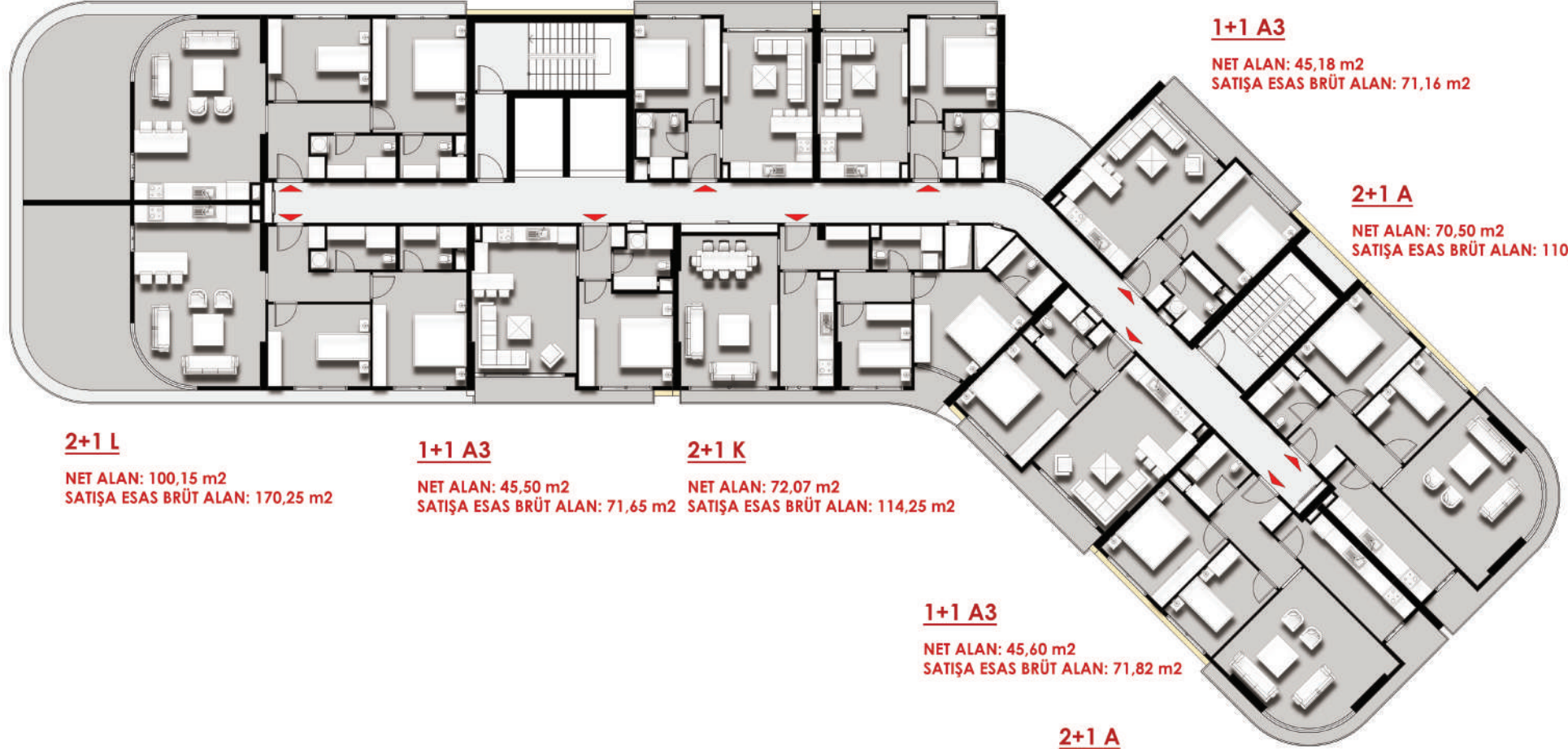
NET ALAN: 100,15 m²
SATIŞA ESAS BRÜT ALAN: 170,25 m²

1+1 A2

NET ALAN: 40,73 m²
SATIŞA ESAS BRÜT ALAN: 63,58 m²

1+1 A2

NET ALAN: 40,82 m²
SATIŞA ESAS BRÜT ALAN: 63,78 m²



1+1 A3

NET ALAN: 45,18 m²
SATIŞA ESAS BRÜT ALAN: 71,16 m²

2+1 A

NET ALAN: 70,50 m²
SATIŞA ESAS BRÜT ALAN: 110,17 m²

2+1 L

NET ALAN: 100,15 m²
SATIŞA ESAS BRÜT ALAN: 170,25 m²

1+1 A3

NET ALAN: 45,50 m²
SATIŞA ESAS BRÜT ALAN: 71,65 m²

2+1 K

NET ALAN: 72,07 m²
SATIŞA ESAS BRÜT ALAN: 114,25 m²

1+1 A3

NET ALAN: 45,60 m²
SATIŞA ESAS BRÜT ALAN: 71,82 m²

2+1 A

NET ALAN: 70,50 m²
SATIŞA ESAS BRÜT ALAN: 110,17 m²

1+1- D

NET ALAN: 78,15 m²
SATIŞA ESAS BRÜT ALAN:132,85 m²

1+1- A2

NET ALAN: 40,73 m²
SATIŞA ESAS BRÜT ALAN:63,58 m²

1+1- A2

NET ALAN: 40,82 m²
SATIŞA ESAS BRÜT ALAN:63,78 m²

1+1- A3

NET ALAN: 45,18 m²
SATIŞA ESAS BRÜT ALAN:71,16 m²

1+1- E

NET ALAN: 69,69 m²
SATIŞA ESAS BRÜT ALAN:118,47 m²

1+1- D

NET ALAN: 78,15 m²
SATIŞA ESAS BRÜT ALAN:132,85 m²

1+1- A3

NET ALAN: 45,50 m²
SATIŞA ESAS BRÜT ALAN:71,65 m²

2+1- K

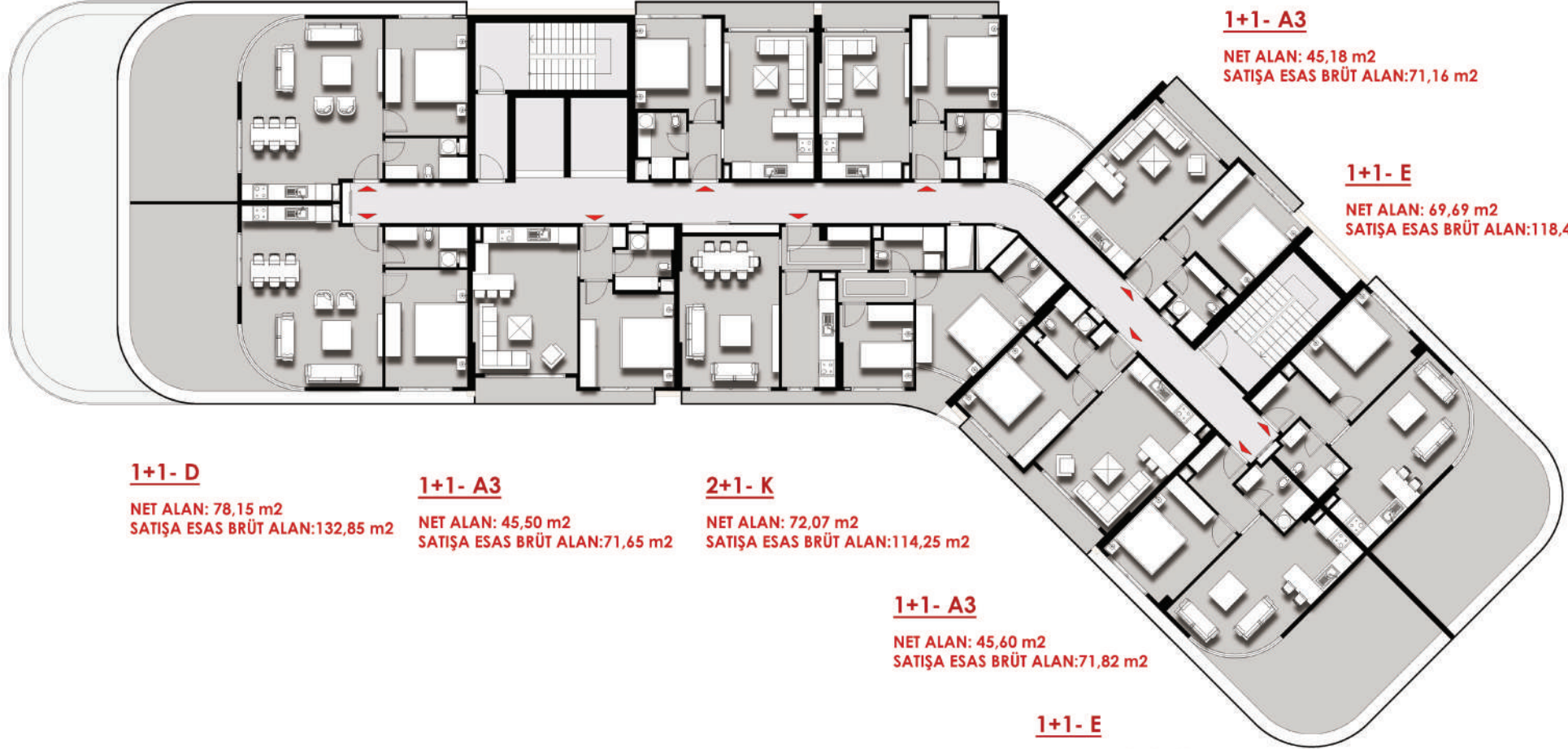
NET ALAN: 72,07 m²
SATIŞA ESAS BRÜT ALAN:114,25 m²

1+1- A3

NET ALAN: 45,60 m²
SATIŞA ESAS BRÜT ALAN:71,82 m²

1+1- E

NET ALAN: 69,69 m²
SATIŞA ESAS BRÜT ALAN:118,47 m²



1+1 A2

NET ALAN: 40,73 m2
SATIŞA ESAS BRÜT ALAN:63,58 m2

1+1 A2

NET ALAN: 40,82 m2
SATIŞA ESAS BRÜT ALAN:63,78 m2

1+1 A3

NET ALAN: 45,18 m2
SATIŞA ESAS BRÜT ALAN:71,16 m2

3+1 B

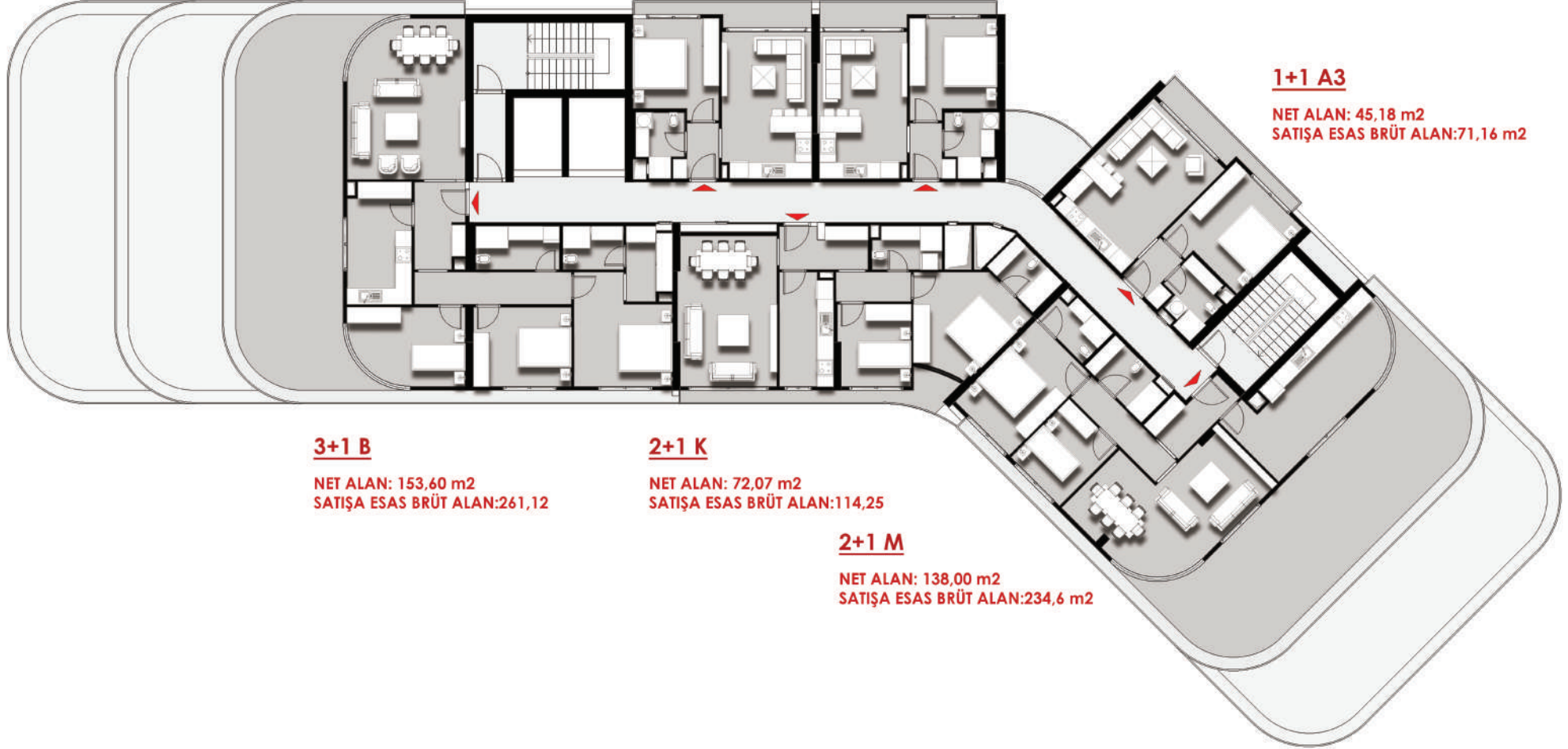
NET ALAN: 153,60 m2
SATIŞA ESAS BRÜT ALAN:261,12

2+1 K

NET ALAN: 72,07 m2
SATIŞA ESAS BRÜT ALAN:114,25

2+1 M

NET ALAN: 138,00 m2
SATIŞA ESAS BRÜT ALAN:234,6 m2



Sosyal Alanlar & İmkanlar

- Kapalı Yüzme Havuzu
- Sauna
- Buhar Odası
- Spor Salonu
- Masa Tenisi
- Kapalı Otopark
- 7/24 Güvenlik
- Resepsiyon



BRAND
A TAKENT

444 20 67
www.ems-yapi.com



BRAND
ATAKENT

444 20 67
www.ems-yapi.com



BRAND
A TAKENT

444 20 67
www.ems-yapi.com



BRAND
ATAKENT

444 20 67
www.ems-yapi.com



BRAND
ATAKENT

444 20 67
www.ems-yapi.com



BRAND
A TAKENT

444 20 67
www.ems-yapi.com

Detaylı Bilgi İin;

444 20 67

www.ems-yapi.com



EMSYAPI®

BRAND
A T A K E N T

444 20 67
www.ems-yapi.com